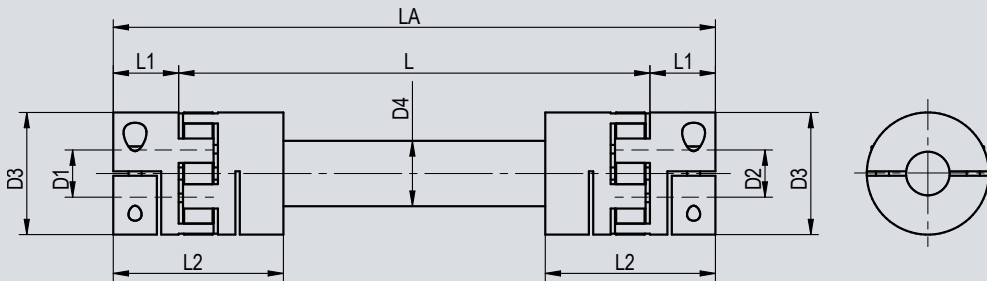
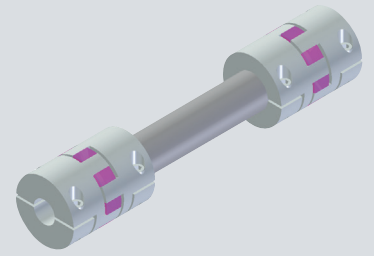


## Connecting shaft KN



L = Clear dimension between the shaft ends.

The connecting shaft KN, a combination of previous models, can be mounted very quickly and easily.

	Torque (Nm)	D1/D2 min./max.	D3	D4	L1	L2
KN050-...	6	8 – 15	32.0	15	20	42.8
KN075-...	12	11 – 20	44.5	20	25	55.8
KN095-...	30	16 – 28	57.0	25	30	67.8
KN100-...	75	19 – 32	68.0	35	35	76.0

### RPM-dependent length determination

