

## Bevel gear boxes ensure transmissions and keep speeds high

Drive situations using several or different components, all driven by the same source, are not uncommon. This requires ideal connections, e.g. by means of [bevel gear boxes](#). They are easy to integrate, they have a compact design and their optimal gear ratio allows them to transmit high rotational speeds to the downstream components. A simple drive unit, to which we devote a little more attention.

### Units – Mostly integrating bevel gear boxes

You surely already developed yourself drives including several components. Have you already thought about solving this in a [finished assembly](#)? Such an example from our [Engineering](#) department is the: **"ALL-IN"**, developed in collaboration with the customer. It includes various components, and also a bevel gear box, and offers a ready-made solution.



### Bevel gear box LMA – Lightweight with direct drive

The model LMA is used for manual drives in general mechanical engineering and fixture construction. It impresses with its compact, lightweight design. This low-maintenance bevel gear box transmits with a 1:1 ratio speeds up to 1,000 min<sup>-1</sup>. Its single-side or through shaft ensure easy integration.

- >> [More information on LMA bevel gear boxes](#)
- >> [Bevel gears in various versions](#)
- >> [Visit the bevel gear boxes](#)



### Bevel gear box RM – High accuracy and smooth running for highest requirements

The RM bevel gear boxes are designed for high requirements. They offer transmission ratios from 1:1 to 1:5 and torques from 19 to 430 Nm. Their high modularity allows a wide range of mounting and combinations, such as e.g. together with screw jacks. The gray cast iron housing ensures stability, compact construction and allows trouble-free continuous operation with little maintenance...

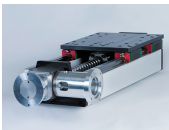
- >> [More information on RM bevel gear boxes](#)
- >> [Bevel gears in various versions](#)
- >> [Visit the bevel gear boxes](#)



### "ALL-IN", the module for lifting and pushing movements

The name speaks for itself – "ALL-IN". A complete unit, with ball screw and a bevel gear box, that is used in handling equipment and lifting aids. Ready-to-install in accordance with your specifications, provided with motor adapter and coupling. This allows you to control lifting and pushing movements. The "ALL-IN" unit can bear loads from 2.5 to 50 kN.

- >> [You will find more information here](#)
- >> [See an "ALL-IN" application](#)



### Summer time – recreation time for everyone

Summer is a good time to take a break and relax. Therefore Nozag will be closed from July 25 to 29, 2022. Our staff will enjoy some holidays and the summer weather. We wish you a relaxing, sunny holidays or, if you are at work, interesting working days.



### Nozag always offers added value and additional service



6,000 drive components in the online shop  
webshop



Calculate directly online with NOZipedia.

Follow us on the social media!

